

*Texada*

# HydraPressed Slabs



Charcoal



*Where function meets style*



**ABBOTSFORD**  
CONCRETE PRODUCTS



"Texada" HydraPressed Slabs have a light shot-blast "architectural finish" producing subtle colors with a distinctive elegant appearance.

## Texada HydraPressed Slabs Light Shot-Blast Architectural Finish

Abbotsford Concrete's HydraPressed Slabs are made to precision sizes with true edges and top edges chamfered for a neat appearance.



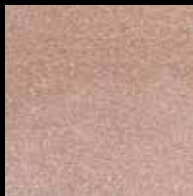
Natural



Charcoal



Desert Sand



Tan



Green



Red



Brown

Abbotsford Concrete Products' HydraPressed Slabs offer volume production, exacting standards and low cost... a winning combination suitable for any setting.

### Specifications:

#### ABBOTSFORD CONCRETE PRODUCTS

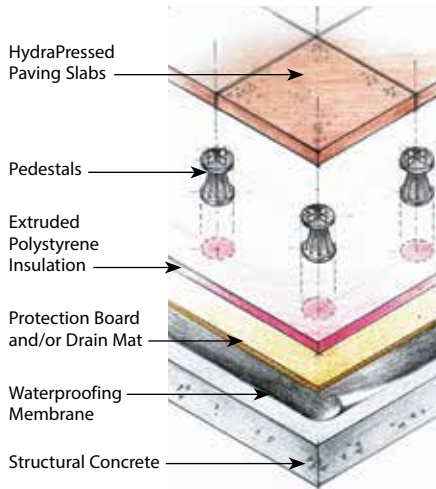
HydraPressed Slabs to CSA A231.1-14  
ASTM C1782/C1782M-16 specifications.

**Concrete strength:** 8000 PSI (55 MPA)  
**Absorption:** shall not exceed 5%  
**Flexural strength:** Average flexural (transverse) strength of the concrete paving slabs shall be at least 725 PSI (5 MPA) when tested in accordance with CSA A231.1-14  
ASTM C1782/C1782M-16

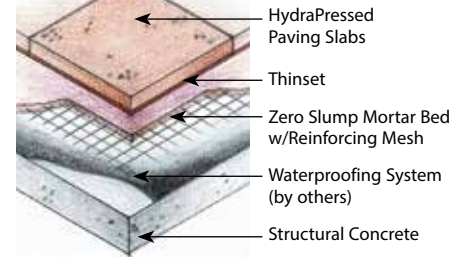
Center point load test of pedestal-supported slabs: 1800 lbs.



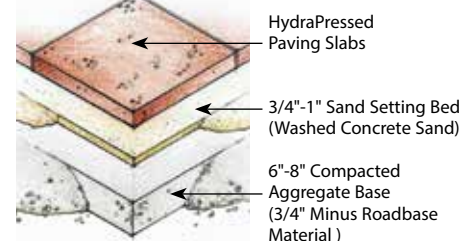
### Pedestal Installation



### Mortar Set



### Sand Set



### Standard Sizes:

24" x 12" x 2"	610mm x 305mm x 50mm
24" x 24" x 2"	610mm x 610mm x 50mm
18" x 18" x 1-5/8"	457mm x 457mm x 40mm

### Cut to Sizes:

18" x 9" x 1-5/8"	457mm x 229mm x 40mm
12" x 12" x 2"	305mm x 305mm x 50mm
9" x 9" x 1-5/8"	229mm x 229mm x 40mm

Visit our website at  
[www.pavingstones.com](http://www.pavingstones.com)  
for our complete product guide,  
design details and photo gallery  
or call toll free 1-800-663-4091



**ABBOTSFORD**  
CONCRETE PRODUCTS