

Estate Stone with Face Mix



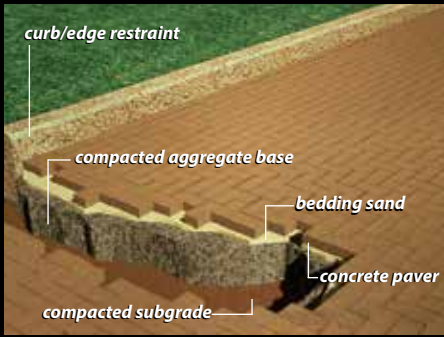
Granite with Pacific Grey colored sand

Where function meets style



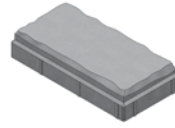
ABBOTSFORD
CONCRETE PRODUCTS

Oldcastle APG
A CRH COMPANY



Estate Stone with Face Mix

Estate Stone with its worn distressed appearance gives that historical ambience reminiscent of Old World Charm. Designed with its wider joint, Estate Stone uses high performance polymeric joint sand to enhance and complete the installation. By simply choosing a different colored sand you can dramatically change your projects overall appearance.



Length: 11⁷/₈" (301 mm)
Width: 5¹⁵/₁₆" (151 mm)
Area: 2 stones /ft²
 21.5 stones /m²
Thickness: 2³/₈" (60mm)

With Estate Stone, you can use different colors of Polymeric Sand to complement and personalize your project.



Copper Canyon Estate Stone * Blend with Pacific Grey colored sand



Copper Canyon Estate Stone * Blend with Tan colored sand



Copper Canyon Estate Stone * Blend with Ivory colored sand



La Jolla Estate Stone* Blend with Pacific Grey colored sand



La Jolla Estate Stone* Blend with Black colored sand



La Jolla Estate Stone* Blend with Tan colored sand



Granite Estate Stone* Blend with Pacific Grey colored sand



Granite Estate Stone* Blend with Black colored sand



Charcoal Estate Stone with Pacific Grey colored sand



Charcoal Estate Stone with Black colored sand

High Performance Polymeric Joint Sand

This paver is installed in the same way as our other pavers, however, Estate Stone requires the application of High Performance Polymeric Joint Sand designed for use with wide joint formats.



How to get a professional look.

1. Compact and level the sub-base.
2. Backfill with 4" to 10" (100-250mm) of 3/4" minus road mulch or equivalent compacted granular fill.
3. Spread 1" (25mm) of concrete sand over fill. Avoid walking on the prepared base as this may cause the finished surface to be uneven.
4. Place Estate Stone pavers in the desired pattern close together. The spacing should be consistent to help maintain a uniform pattern. Pavers can be cut to fit with a paver cutter or masonry saw.
5. Compact pavers with a mechanical plate compactor until level and firmly in place.
6. Fill joints completely by sweeping in High Performance Polymeric Joint Sand according to the manufacturer's installation instructions.

Specifications:

ABBOTSFORD CONCRETE PRODUCTS

Pavers are manufactured to ASTM C936/C936M-18 and CSA A231.2-19 specifications.

HydraPressed Slabs to ASTM C1782/C1782M-19 and CSA A231.1-19 specifications.

Concrete strength: 8000 PSI (55 MPA)
Absorption: shall not exceed 5%
Weight: 2- 3¹/₈" (60mm): approx. 28lbs/ft² (140kg/m²)
 3- 1¹/₈" (80mm): approx. 37lbs/ft² (182kg/m²)

Visit our website at

www.pavingstones.com

for our complete product guide, color selection, design details and photo gallery, or call toll free 1-800-663-4091.



ABBOTSFORD
CONCRETE PRODUCTS

Oldcastle APG
A CRH COMPANY